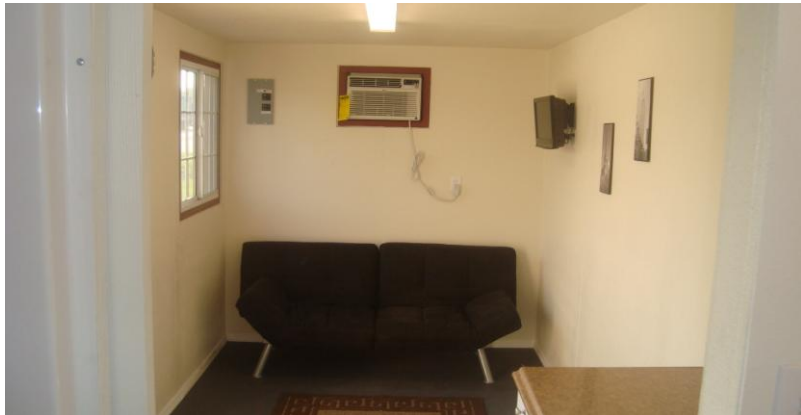


NEW - Workforce Housing Units - All Container Sizes.



NEW - Workforce Housing Kits

- Full Bathroom POD, Shower, Sink Unit, Toilet, Shelving & Hot Water Tank, Poly Vinyl Flooring, Lighting, Vent, Accessories.
- CSIP-All required Container Structural Insulated Panels based on the kit ordered. The panels are made with 2"x3" wood studs 16" O.C. and have a 1/4" ACX plywood sheet as the finished face. All walls have an R-13 rating.
- Electrical Package-125 AMP Breaker Box, three 15-AMP and one 20 AMP breaker, two four foot fluorescent 2 bulb light fixtures, 12-2 Romex wire, exterior junction box, gang boxes pre-mounted in walls, one light switch, three outlets. All Products UL Rated.
- Weld-N-Go Systems TM -All Kits come with one Weld-N-Go TM Window and one Weld-N-Go TM Man Door.
- System does not require any special support systems to hold the walls or roof in place. All walls are toe nailed to the container floor and the roof is supported by the sidewall. Roof is suspended so electrical can run in any direction.
- A/C Unit -An 8,000 BTU Air conditioning unit with heat strip 115 Volt and A/C Cage is included in each office kit. Upgrades to 12,000 BTU with heat pump or a Bard 1 Ton with heat pump is available.

Advantages

Quick Assembly—2 men at 4.5 HRS
Consistency of End Product
Durable
Ease of Install
Cost Effective

17232 S. Figueroa St., Gardena, CA 90248
Phone 562-366-0784 Fax 562-366-0805

